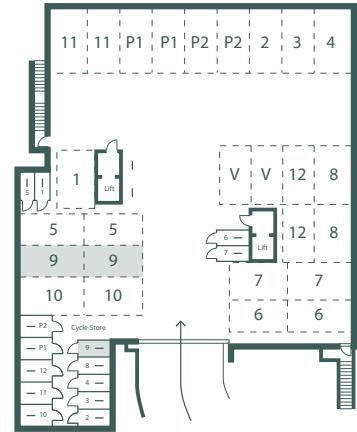
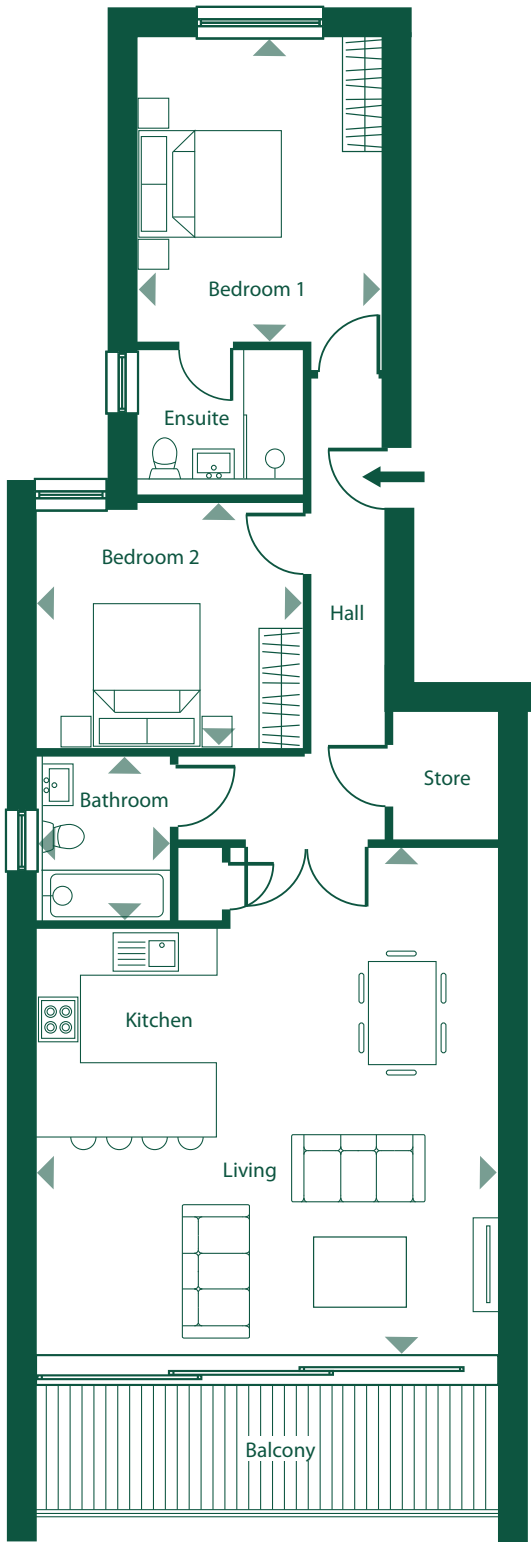
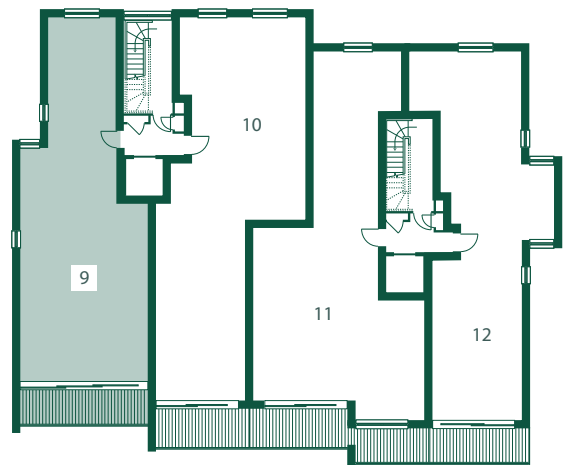


# Apartment 9 - Second floor



Underground Parking & Cycle Store



Apartment Location



Kitchen/Living Room	6.87m x 6.32m
Bedroom 1	4.26m x 3.51m
Bedroom 1 En-suite	2.42m x 1.99m
Bedroom 2	3.70m x 3.35m
Bathroom	2.24m x 1.97m
Balcony	11.3m <sup>2</sup>

**SQUARE METRES - 90m<sup>2</sup>**

PLEASE NOTE: All room sizes and square metres are approximate

PLEASE NOTE: All rooms sizes and square footage are approximated. Dimensions taken from scaled plans. The artist's impression, photographs, floor plans, configurations and layouts are included for guidance only. The Developer therefore gives notice to prospective purchasers that none of the material issued or visual depictions of any kind made on behalf of the Developer can therefore be relied upon as accurately describing in relation to any particular proposed house or development of the company, as of the Specified Matters from time to time prescribed under the Properties Misdescriptions Act 1991, which is effective from 4 April 1993. All such matters must be treated as intended only as a single illustration and guidance. They are subject to change from time to time without notice and their accuracy is not guaranteed, nor do they constitute a contract part of a contract or warranty