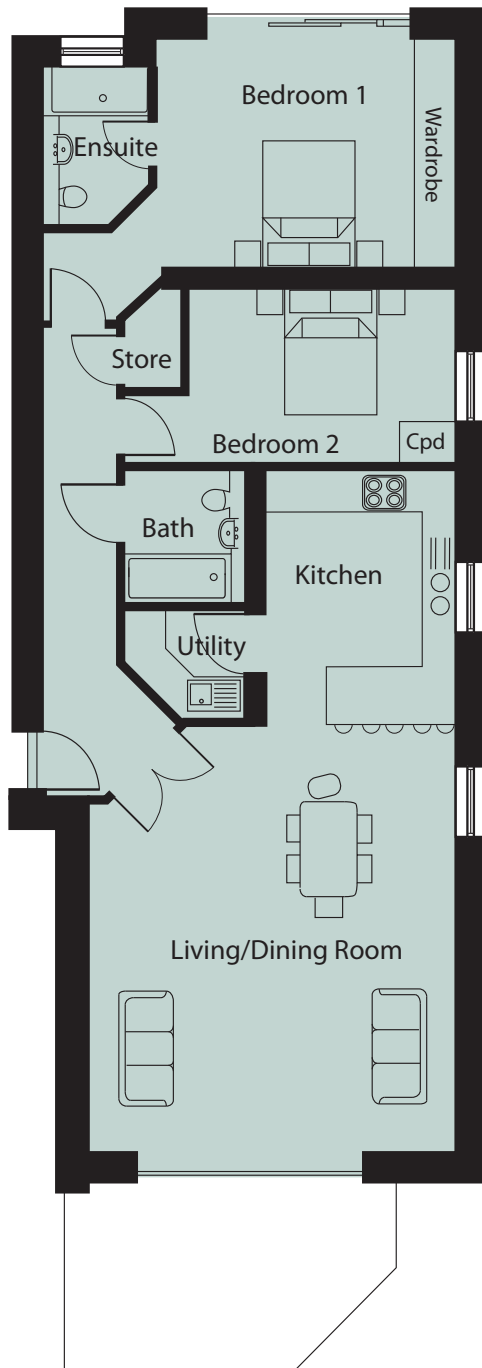


FLAT 4 - FIRST FLOOR



Living room

6.91 x 6.00m – 22'8" x 19'8"

Kitchen

4.01 x 3.16m – 13'2" x 10'4"

Bedroom 1

4.82 x 3.88m – 15'10" x 12'9"

Bedroom 1 En-suite

2.77 x 1.74m – 9'1" x 5'9"

Bedroom 2

4.33 x 2.81m – 14'2" x 9'3"

Bathroom

2.08 x 2.00m – 6'10" x 6'7"

Balcony 13.8 m²/146.65 ft²

